

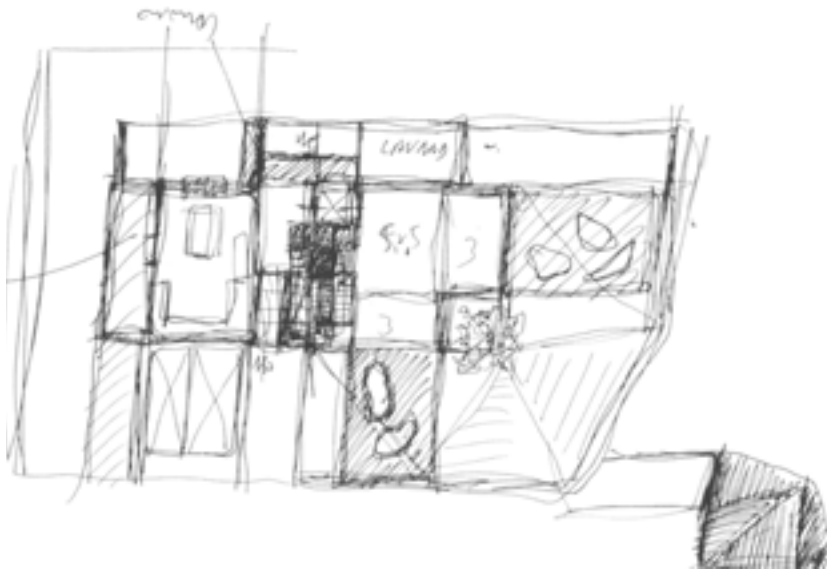


FREEDOM TO CREATE

ITALIAN PROJECT

BROMBAL MAGAZINE #3
AUG 2016

PROJECT, IDEA, REALIZATION



CONTEXT AND CURRENT STATUS (BEFORE INTERVENTION)

The field is located at the intersection of two roads in a residential zone close to the historical center of Castelfranco Veneto. In this area, the buildings were mostly built during the Sixties and are typically two-storey houses. The existing building instead was a one-storey house covering almost completely the field, resulting so poorly detached from the other buildings and with a very small green area.

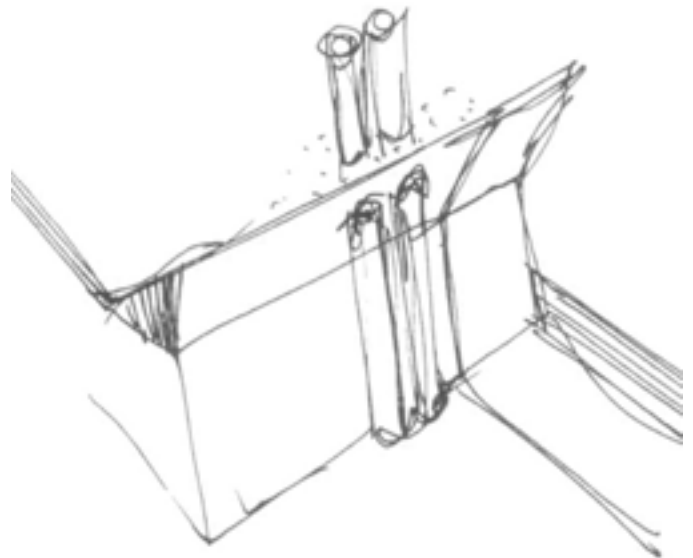
THE REMODELING PROJECT

From the very first meetings with the client and from the surveys on site, it was clearly the will of integration between the inside and the outside of the house, with big glazed surfaces and wall recesses in order to have the garden advancing towards (and being part) of the house itself. The remodeling project was then born following the need to enlarge the house first, but at the same time with the aim to create a strong relationship between the life inside and outside the house, melting internal and external spaces.

The building is made by two distinct units which are different both for the shape and for the kind of finish: the South part utilizes large glazing walls and has a 2 slope roof, while the North part is more private, with a flat roof housing a roof garden. A very important operation was the excavation that was made on the South-West corner of the field, from the road level to the new basement level. On this excavation a new green area was created on which all the Southwest part of the house overlooks. This area increases the green space with horizontal and vertical vegetation surfaces and is highly accessible both from inside and outside the house.

The separation between different spaces and functions has been preserved with different floor levels, stairs and an elevator located in the middle of the house with stops at all levels in order to give the possibility to live effortlessly and seamlessly throughout all the spaces.

The basement hosts a garage with a park-lift system (that solved the limited parking space), a winery, the service rooms and a security room.



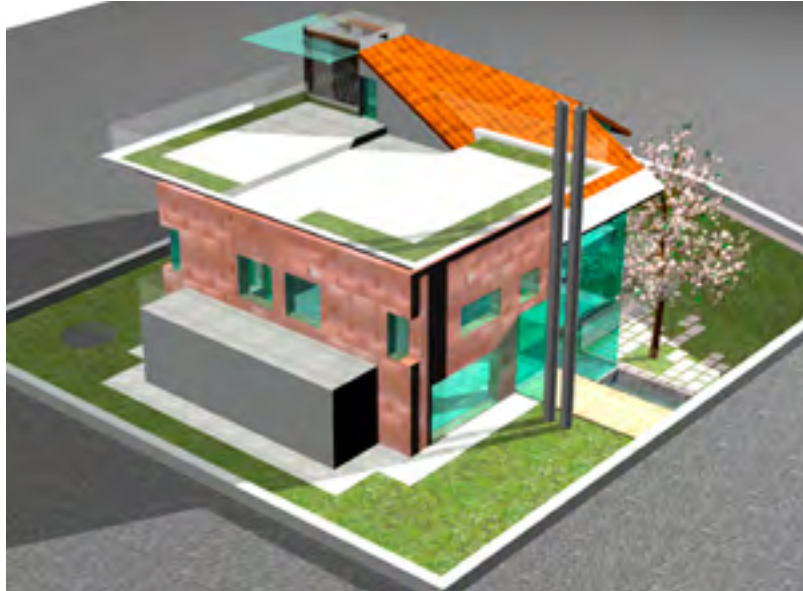
On the main level there is the hall, the dining room, the kitchen, the service rooms and the large living room totally glazed towards the lower garden. The next two stories are finally dedicated to the bedrooms but there is also an office, a cloakroom and an attic. Over the Northwest part of the house a roof garden has been created with a very thick layer of soil, giving the possibility to place plants with deep roots.

MATERIALS AND FINISHES

All the cladding materials have been inspired by bioclimatic and traditional architecture and the building has been furnished with all the most innovative solutions in relation to its control and energy saving.

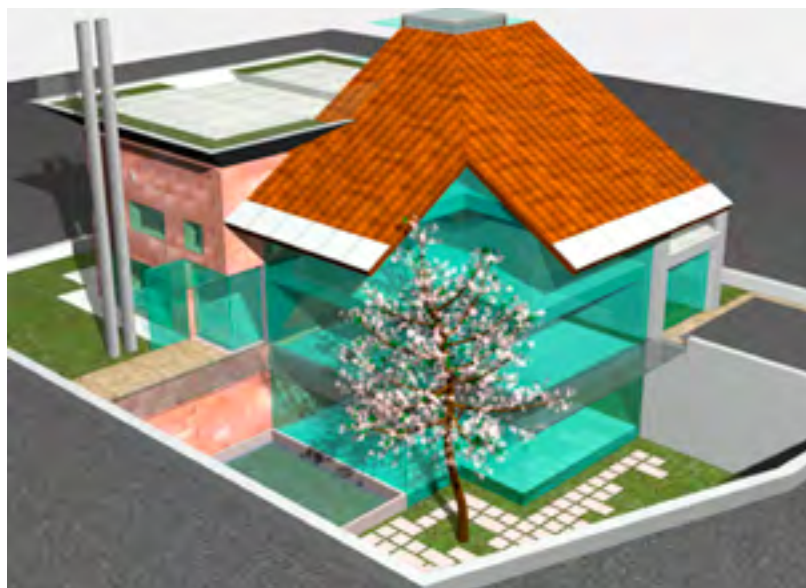
The walls are made of thick bricks insulated with cork and wood fiber panels; the plasters (internal and external) are made with lime, while the external claddings are made with Vals stones. The fenestration systems are made with thermally - broken Cor-ten steel profiles and high performance low-e glass. The sloped roof (South and West) is ventilated and has been realized with a pre-oxidized copper cladding with integrated solar panels. The flat roof of the North part is wider than the floors below and has a perimetral cantilever with a reverse slope which enhances the feeling of "levitation" of the adjacent flat roof.

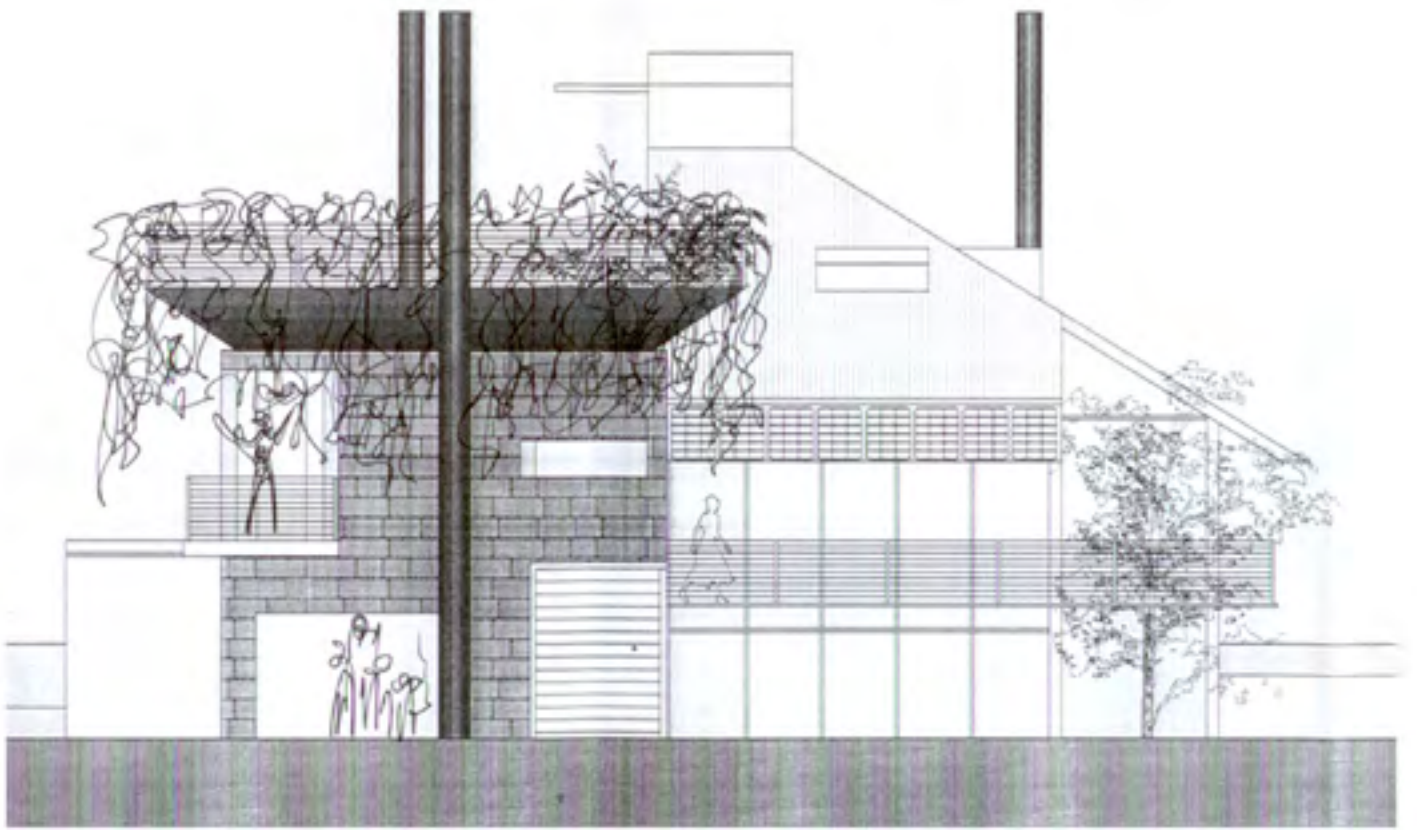
As a unique detail, the surfaces of the concrete molds used for the cantilever were coated with glass in order to obtain a totally flat and smooth concrete surface.



GARDENS AND FEELINGS

The external garden at the basement level, exposed to the South, has become the most private place of the whole house in which the combination of different textures produced by the use of a variety of materials: the grass, the color and smell of plants, the paths made in rough stone. This space is hidden at North and East elevations by the house itself while at South and West it is protected by a thick cor-ten steel fence. Next to the fence, on its internal part, there is a walkway on the top of the retaining wall from which with a single glance the whole building can be seen: the hidden garden, the massive glazed surfaces, the natural stone wall claddings and the plants of the roof garden.







CASTELFRANCO VENETO VILLA

Italian design, performance, and ingenuity speaks loudly from this unique residence. The architect, Aldo Valente, had a vision in which the glass and frames had to play a pivotal role. His prior history with Brombal assured him that leaving this important decision with the Brombal team would enable him to achieve the look, sizes, and functionality he needed.

At Brombal they call this assurance the “Freedom to Create”. Architects from around the world are calling upon Brombal to provide them with unique solutions. In this particular case Aldo Valente wanted to make a strong statement by contrasting the window and door frames from adjacent materials.

He chose CorTen steel, one of 4 standard metals available. It looks amazing and each year seems to only add more elegance.

Large fixed glass lites in combination with Lift/Slide panels bring vast amounts of natural light into the structure. The exterior gardens provide an oasis around this urban dwelling. Being able to offer wall-to-wall glass opens the interior towards these soothing garden views meeting the demands of the homeowner and architect. The homeowner is pleased to allow Brombal guests to stop by the residence in order to see for themselves this unique combination of fenestration excellence. Brombal’s satisfaction comes from the compliments received and friendships they develop from their satisfied clients.





“FREEDOM TO CREATE”



CUSTOMIZED PIVOTING DOOR SYSTEM

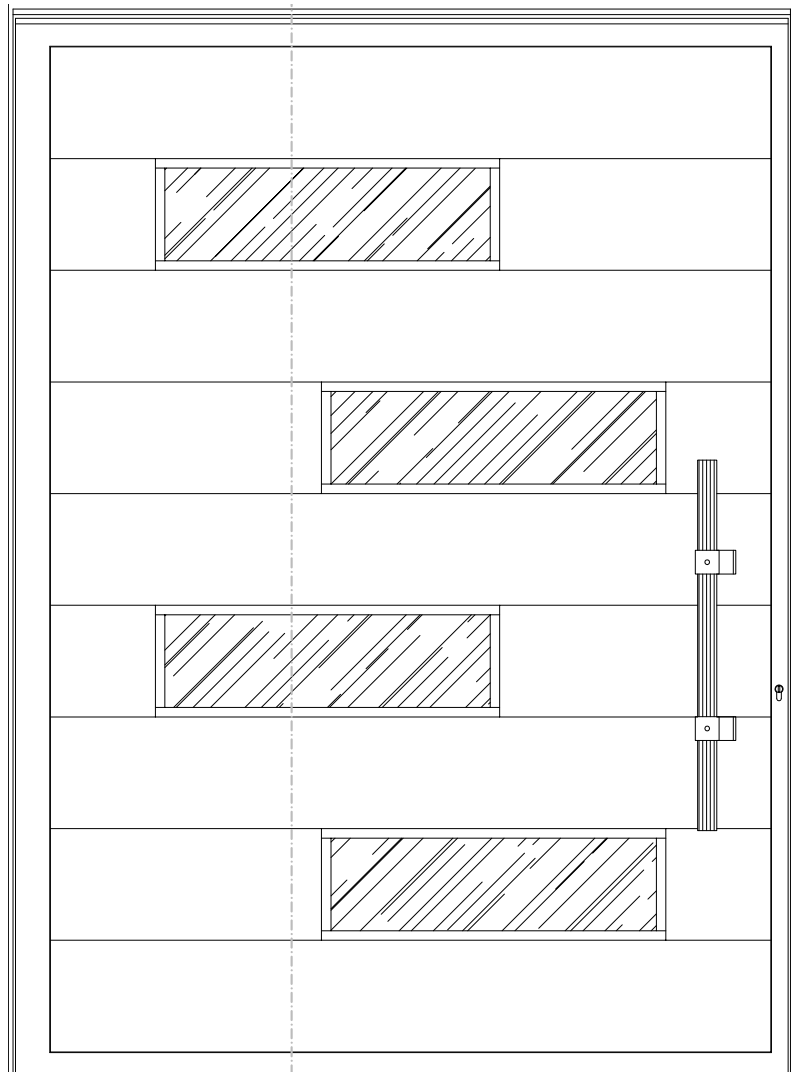
Ralph Waldo Emerson said, “Be an opener of doors”. Upon reflection there is a figurative and literal interpretation one could surmise. For Brombal this wise advice is indoctrinated into who we are. Doors give access through barriers and sometimes the barrier itself can be the door.

Why, because architectural requests for larger and more complicated door designs are becoming ever more difficult for manufacturers to achieve.

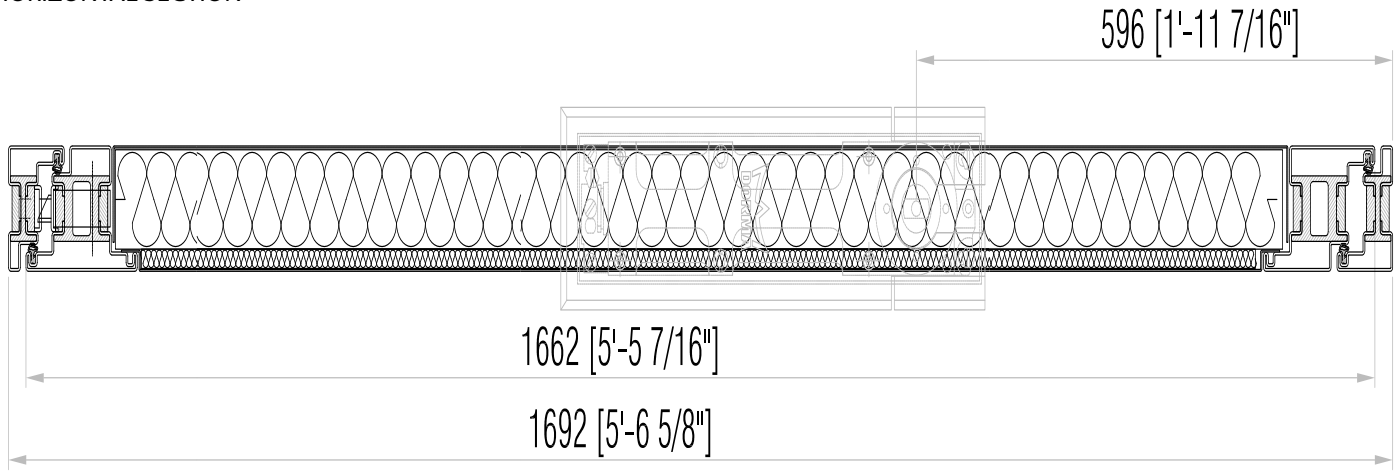
Brombal is “an opener of doors”. We want to provide architects with a reliable source to meet their design criteria. Pivot doors are one way we are making this happen.

Pivot doors are customizable in many ways. Through the use of strong weight bearing floor pivots massive sizes can be reached. Panel designs, metal/wood overlays, glass inserts, and pull handles can be customized into a perfect combination of form and function. These doors are statement pieces.

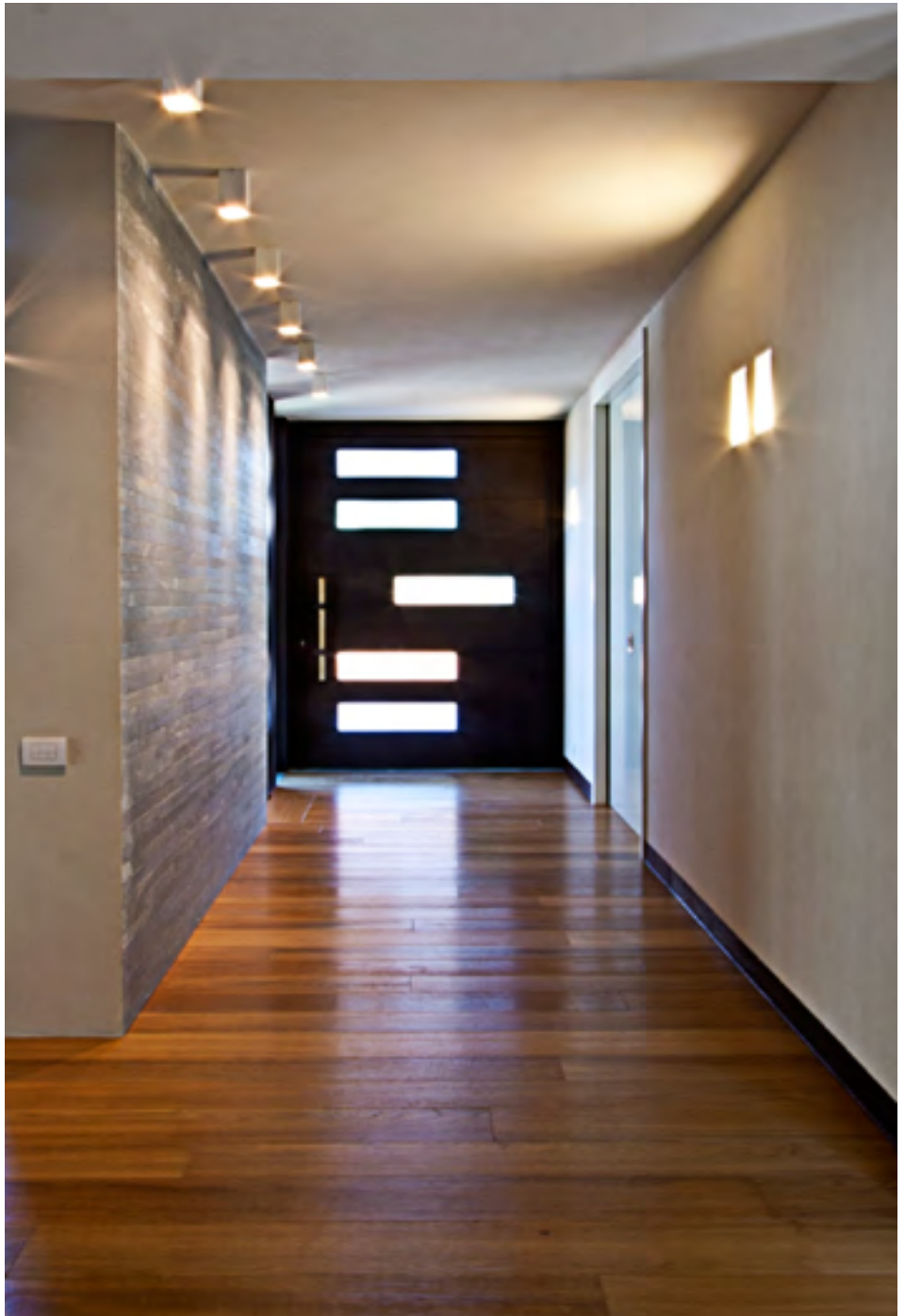
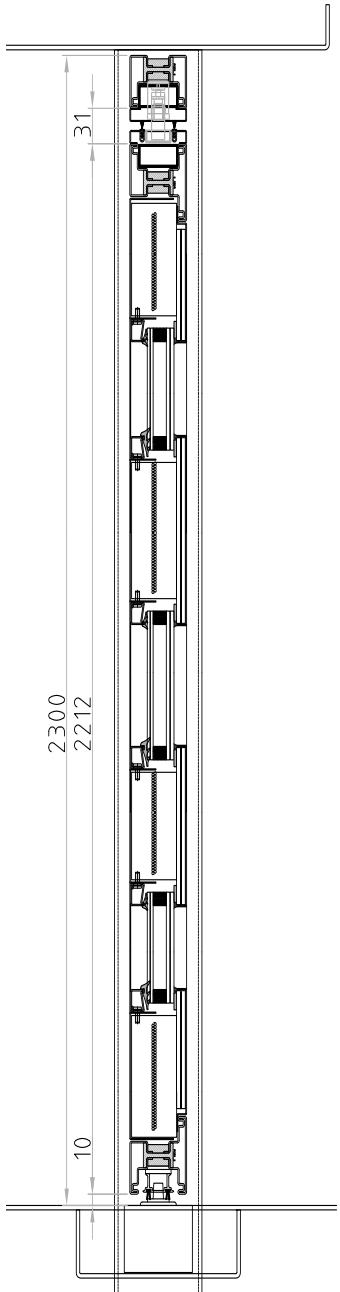
The Castelfranco residence utilizes CorTen frames and insulated panels in combination with horizontal white laminated glass inserts. Masculine white oak rounded hardware pulls provide a comfortable feel as this 700lb door leaf smoothly glides on its pivot. This door is an impact piece. Your eyes are immediately drawn to it as you approach from the street. Brombal has achieved their goal, becoming an opener of doors.



HORIZONTAL SECTION



VERTICAL SECTION



CorTen

For many decades CorTen has been used in construction for practical purposes relating to its special characteristics; corrosion resistance and structural tensile strength. The primary metal alloys in CorTen; copper, chromium, and nickel provide a corrosion-reducing effect by forming a protective surface layer that continuously regenerates when subjected to the influence of its environment.

Within the past 20 years architects have fallen in love with CorTen for its inherent natural beauty and maintenance free attributes. Building facades are now often decorated with CorTen panels. As this trend has continued Brombal quickly realized that the next evolution for CorTen would be in fenestration.

Windows and doors made from CorTen, as shown in the Castelfranco residence, create a desirable patina. It's unique and radiates a natural non-conforming ageless beauty. Maintenance is never an issue. As Brombal once again demonstrates - Freedom to Create is our defining goal.



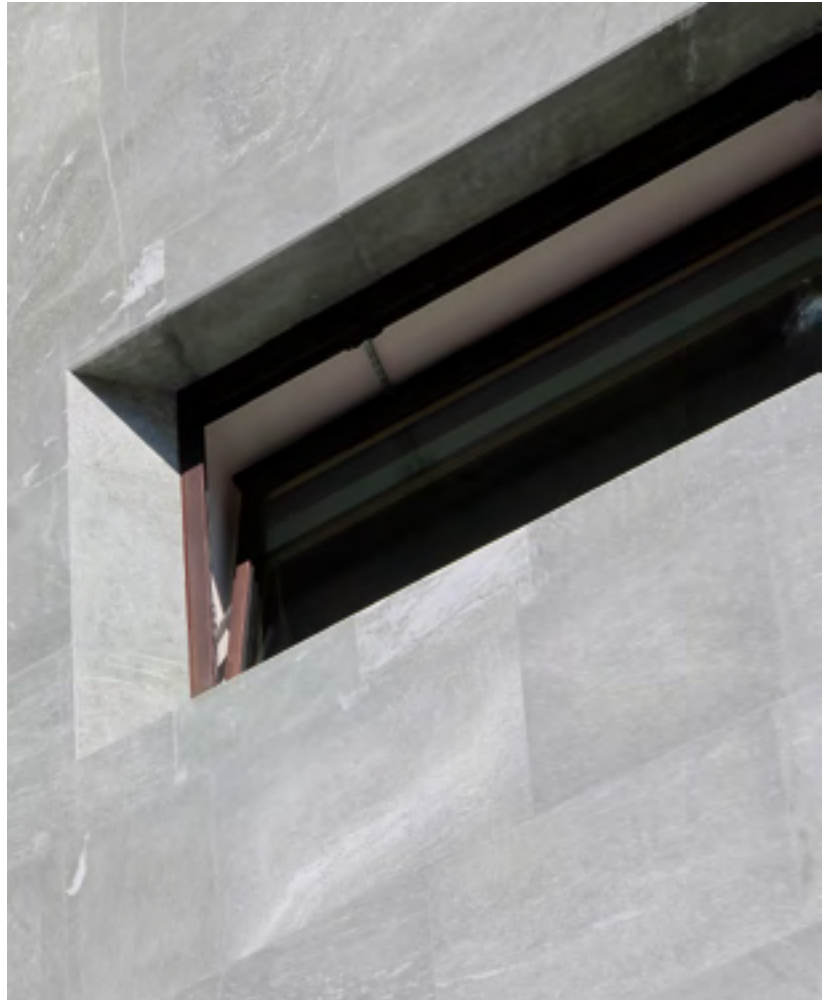
TESTIMONIAL

“The relationship with Brombal, who made and installed the frames and other metal parts of the house, was very positive. The collaboration between us and them was in fact extremely advantageous both for the quality of the products and for the respect of the initial project intent. I had already worked with Brombal in the past and this was the reason why I immediately recommended the company for this peculiar and complicated project.

The company’s working processes, developed during many years of working experience has allowed a careful initial quotation first, and the possibility at all stages for both the designer and client to check materials, samples and technical drawings issued precisely on time by Brombal’s technical department.

The undisputed and utmost skills, the materials and product knowledge have always been a solid landmark on which to rely for both the client and the architect in order to go way beyond the limits of a standard product, allowing the realization of high quality custom frames with innovative materials and finishes.”

ARCHITECT
ALDO VALENTE





PROJECT TEAM

ARCHITECT
STUDIO VALENTE ARCHITETTI
ARCH. ALDO VALENTE
VIA FRANCESCO MARIA PRETI, 37
31033 CASTELFRANCO VENETO -TREVISO

BUILDER
MOLETTA & ZANON S.N.C.
di Moletta Angiolino e Zanon Mauro
VIA MAGLIO 76
35015 GALLIERA VENETO - PADOVA

BROMBAL

LUXURY METAL WINDOWS AND DOORS

BROMBAL Srl
Via Vallà 24 - Caselle di Altivole (TV) Italy
Phone: +39 0423 566189
www.brombal.it

BROMBAL USA
690 surf ave - Stratford, CT 06615
phone: +1 (203) 579 - 5136
www.brombalusa.com

BROMBAL OCEANIA Ltd
PO Box 47286 - Ponsonby
Auckland - New Zealand
phone: +64 22 1262814
www.brombaloceania.com

FOLLOW US ON:

